



STUDENT GUIDE
WAH MEDICAL COLLEGE

Table of Contents

Preface	3
i. Vision of NUMS.....	4
ii. MISSION OF WMC.....	4
iii. Core Values	4
iv. Exit Outcomes for the WMC Graduate.....	5
v. WMC Quality Policy	5
vi. C-MAP	6
vii. Educational And Assessment Strategies	6
viii. Guidance for Students Interested in Research	10
ix. Method to Approach College Authority	11
x. Fire exit plan/ Emergency Exits at End	12

Preface

This handbook is designed for the benefit of students undertaking academic training with WMC and its allied institutes. This provides access to policies & procedures governing graduate academic programmes at Wah Medical College, Wah cantt. Students should become familiar with the academic policies relevant to them for their own benefit.

The College reserves the right to make changes to the Student Handbook at any time. These changes may affect matters such as, academic policies, rules pertaining to student conduct and discipline, and other rules and regulations applicable to students.

It is every student's responsibility to be aware of, and to comply with all regulations, policies, procedures, and deadlines.

Department of Medical Education

Wah Medical College, Wah Cantt

i. Vision of NUMS

The vision of National University of Medical Sciences is to improve the quality of life through education, research, innovation, and healthcare, thereby, contributing to endeavours to make Pakistan and this world better place to live in.

ii. Mission of WMC

To produce competent professional medical graduates equipped with sound knowledge based on scientific principles, imbued with ethics & moral values primed to serve the community through the profession and pursue advanced training in any branch of medicine.

iii. Core Values

- Integrity
- Team work
- Transparency
- Quality
- Excellence
- Professionalism
- Compassion

iv. Exit Outcomes for the WMC Graduate

1. Independently manage common, non-critical clinical problems.
2. Assist in the management of critically ill patients & demonstrate competency in life saving procedures.
3. Exhibit the attributes of an ethical professional.
4. Conduct research which brings relevance to health care practices.
5. Act as an efficient community health promoter.
6. Exhibit scientific knowledge in all professional activities.
7. Demonstrate clear and efficient written & verbal communication skills.
8. Exhibit the habits of a lifelong learner.

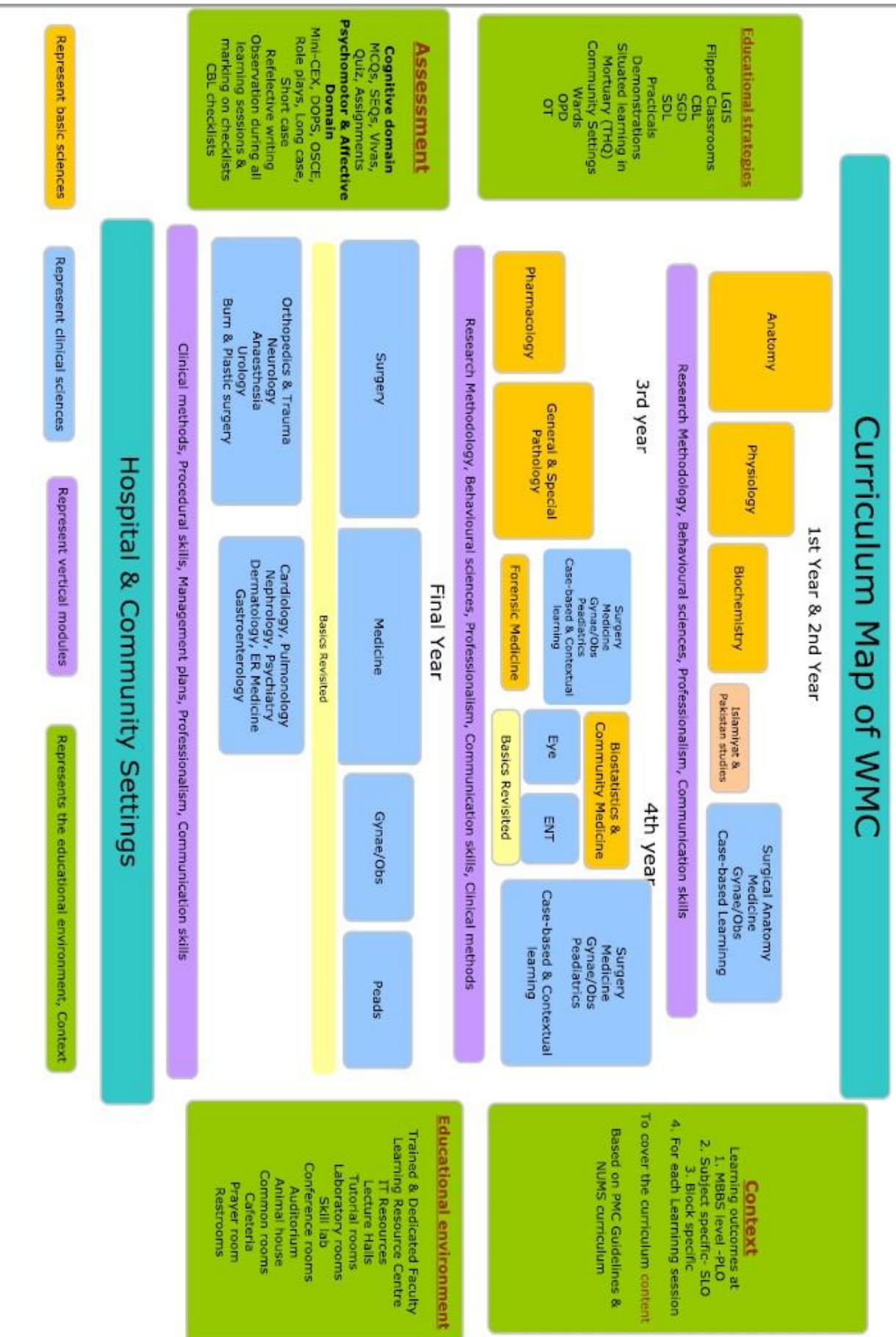
v. WMC Quality Policy

Wah Medical College (WMC) continuously strives to enhance the quality of life by providing sound knowledge based on scientific principles coupled with conducive educational environment to meet and exceed national & international standards.

The principles that WMC pursues to attain excellence in medical education are student & faculty involvement, system approach, applied research, continuous quality improvement and social accountability.

Implementation of the Quality Policy enables WMC to produce professionally competent, skillful, lifelong learners, researchers and well-trained medical graduates imbued with ethics & moral values to serve the community in befitting manner.









vi. C-Map Educational and Assessment Strategies



i. **Commonly used Abbreviations & Logos in the Study Guide**

1. **Educational Strategies:**

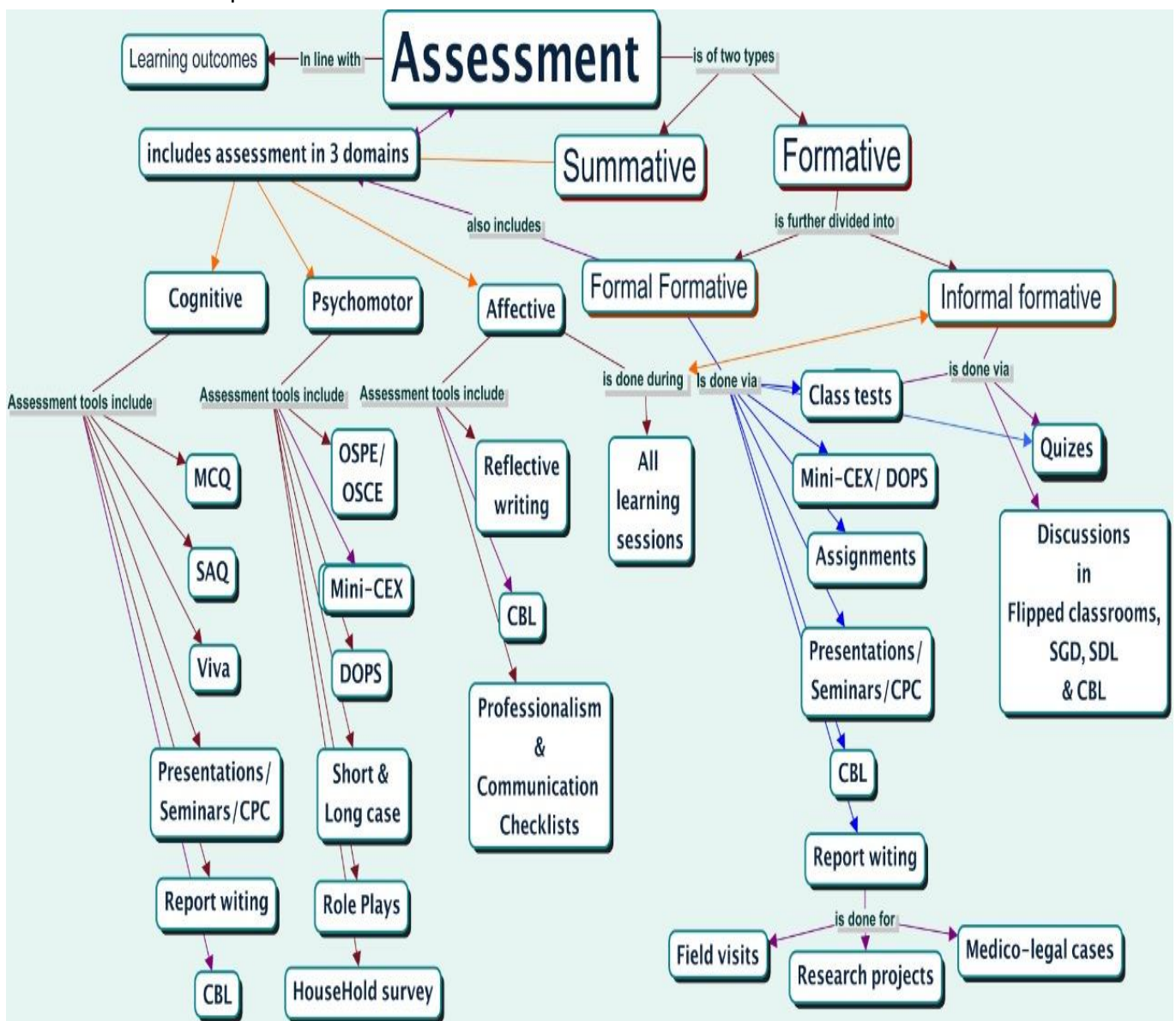
These are the methodologies through which you will be taught by your instructors. These can include.

Abbreviation	Logos
LGIS: Large Group interactive session/Lecture	
Flipped Classroom	
CBL: Case based learning.	
Practicals	
Demonstrations	
SGD: Small group discussions	
BST: Bed Side Teaching	
Skill Lab	
Clinical Teaching (OPD/ OT/ IPD)	

Assessment Strategies:

During the block the students shall be continually formatively assessed.

- The weightage of internal assessment shall be 20% in 1st and 2nd, professional MBBS Examination and 10 % in 3rd, 4th, and final professional
- There shall be three end of block exams and one pre-annual examination.
- The scores of tests at the end of each block assessment and pre-annual examination shall be used for calculation of the internal assessment which will be submitted to NUMS examination branch at least two weeks prior to annual exam.
- The structure of the paper of all the block examination and pre-annual will be same as that for annual examination though syllabus will be different.
- The syllabus for block examination will be announced by the department at least 02 weeks prior to examination.



Marks for different subjects:

- Annual theory and practical examination shall be conducted for following subjects:

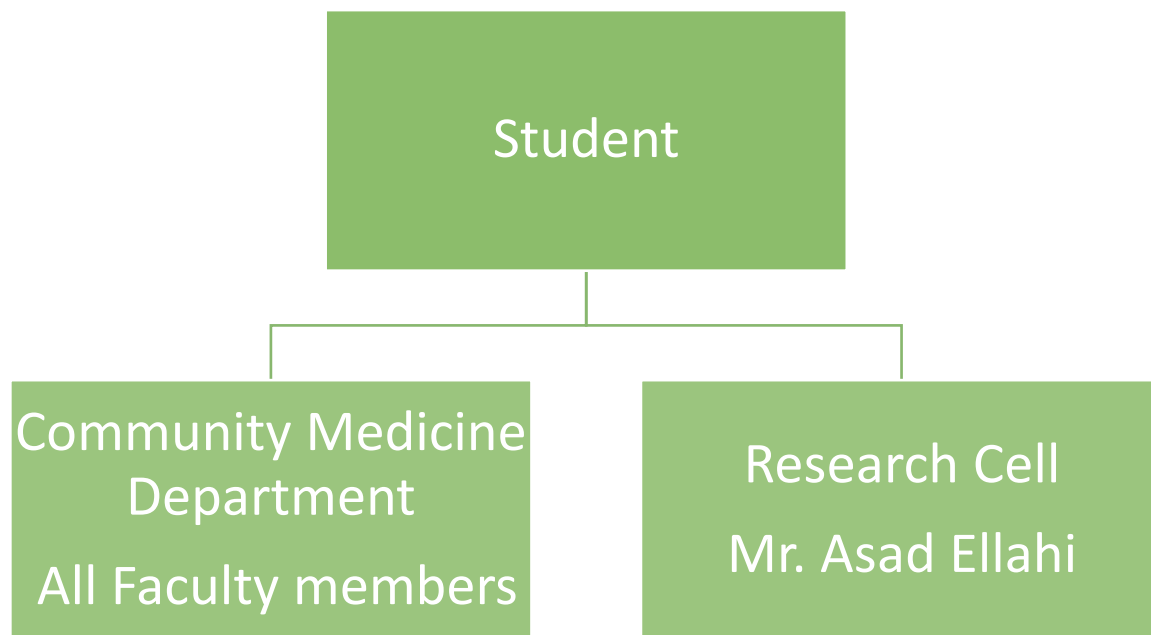
Professional exam	Subjects	Marks
1 st	Anatomy I	200
	Physiology II	200
	Biochemistry II	200
	Islamiyat & Pakistan Studies	
2 nd	Anatomy II	200
	Physiology II	200
	Biochemistry II	200
3 rd	Pathology	500
	Pharmacology/ Therapeutics	300
	Forensic Medicine/Toxicology	200
4 th	Community Medicine	300
	ENT	200
	Ophthalmology	200
	Behavioral Sciences	200
5 th	Surgery & Allied	600
	Medicine & Allied	600
	Gynecology & Obstetrics	200
	Paediatrics	200

- The pass score shall be 50% in theory and practical separately.

A study guide is published and made available to all students via WMC website ([WMC](#)) G-classroom and WhatsApp groups before the start of each block. It provides relevant information about all the content taught in that block.

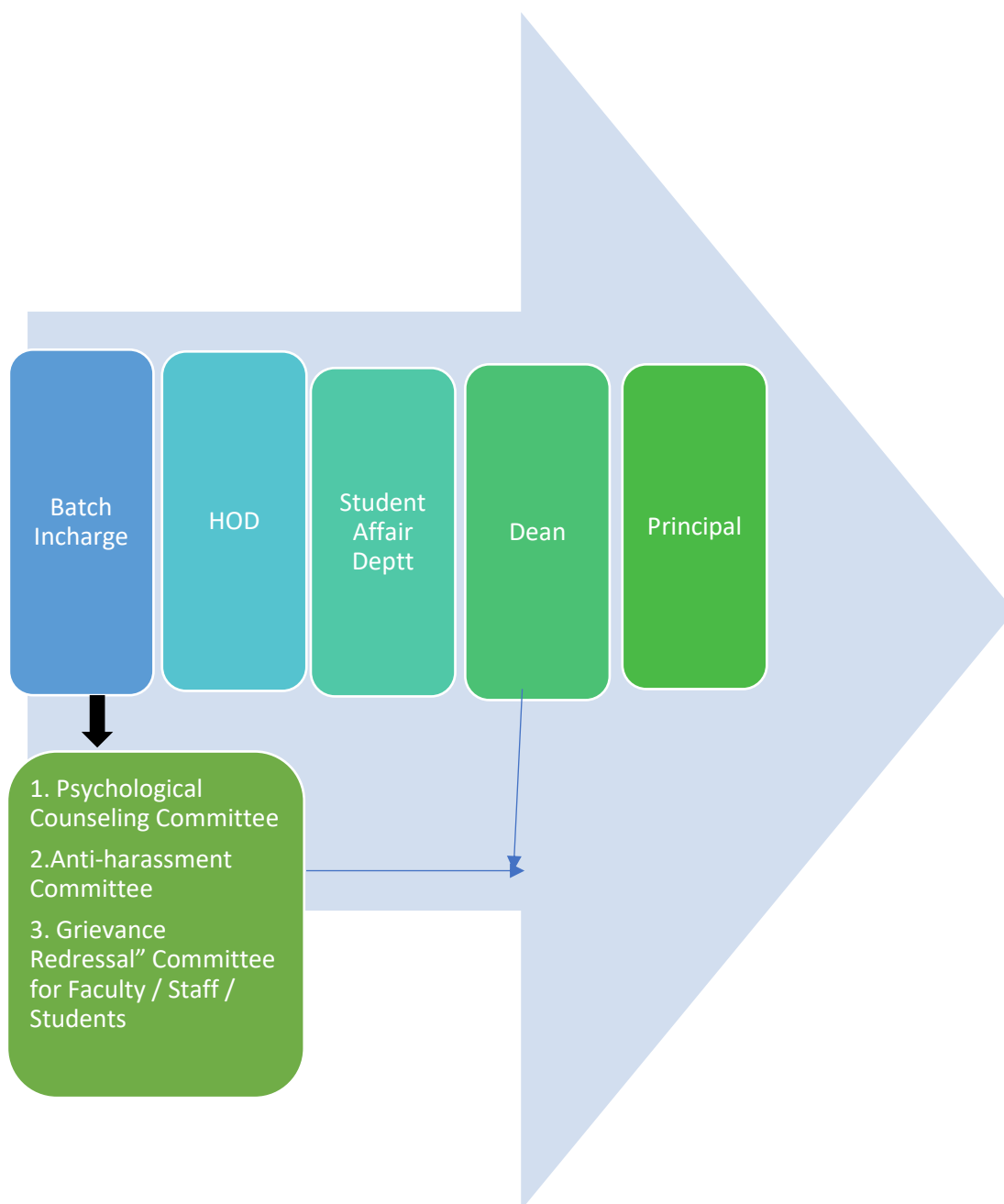
vii. Guidance for Students Interested in Research

Students interested in conducting research may take guidance from Research Cell or Community Medicine department



viii. Method to Approach College Authority

The students facing any problem may approach the college authority following the given hierarchy.



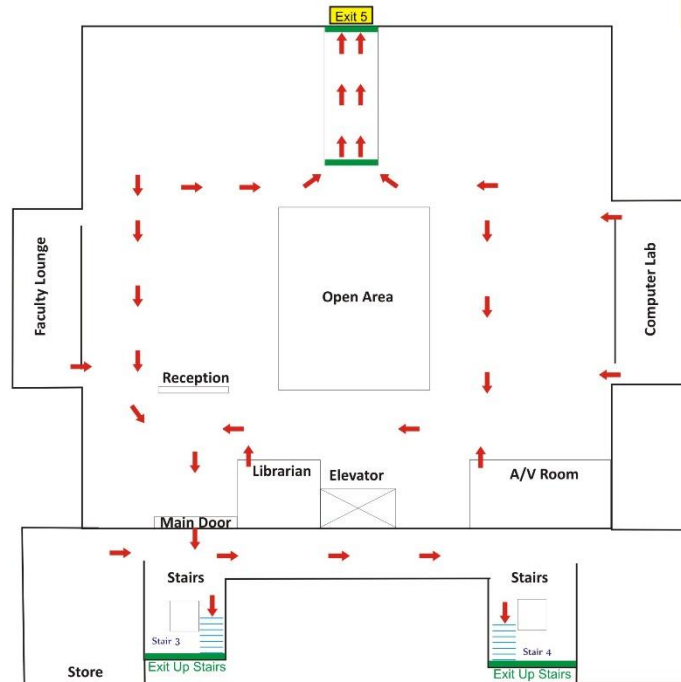
IX. FIRE EXIT PLAN/ EMERGENCY EXITS AT END

EMERGENCY EVACUATION PLAN - WMC

DEPARTMENT

LIBRARY

BASEMENT



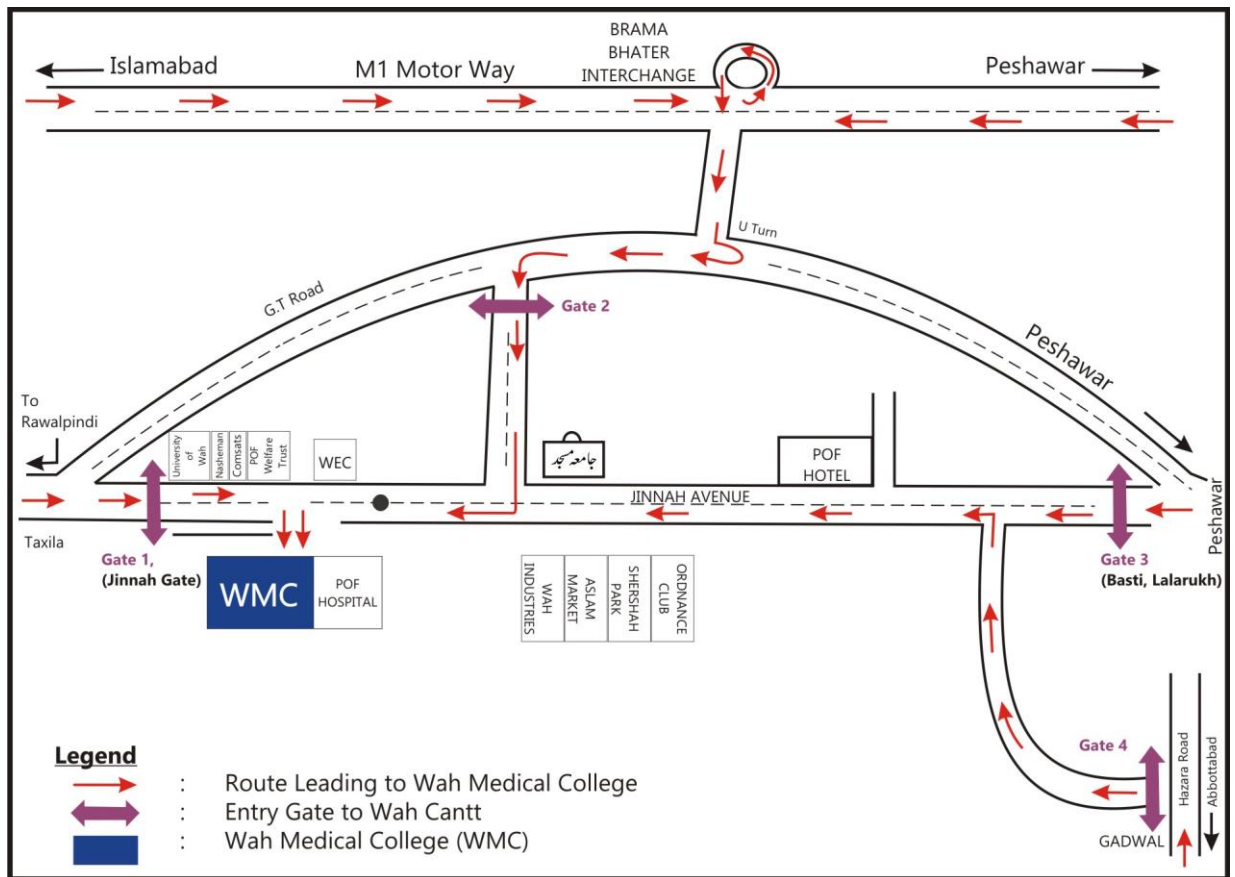
EMERGENCY EVACUATION PLAN - WMC

DEPARTMENT

ANATOMY
PHYSIOLOGY
EXAM CELL
ADMIN / P&S
STUDENT AFFAIRS
FINANCE
BOOK SHOP
CAFÉ

GROUND FLOOR





Following Policies are available in WMC policy Document and WMC Website

<https://wahmedicalcollege.edu.pk/>

1. Policy for Students Code of Conduct
2. Policy for Student Discipline
3. Policy for Uniform Code and Uniform Checking
4. Policy for Student Attendance
5. Exam Instructions for Students
6. Assessment Policy
7. Policy for Electives
8. Policy for Remedial Classes
9. Guidance for Students Interested in Research
10. Policy for Academic Counseling of Students
11. Policy for Career Counseling
12. Policy for Psychological Counseling
13. "Grievance Redressal" Policy for Faculty / Staff / Students
14. Policy for Co-Curricular Activities
15. Policy for Students Excursion / Shopping Trips
16. Policy for Hostels
17. Health Coverage Policy for the Faculty / Staff / Students
18. Policy for Insurance of Students
19. SOP - Fee Collection
20. Policy COVID-19 SOPs Students
21. Policy for Board of Studies
22. Policy for Migration of Students
23. Anti-harassment Policy
24. Endowment Fund Policy
25. Fee Concession & Scholarship Policy
26. Learning Resource Center (LRC)
27. Policies For Safe Custody And Confidentiality Of Students Records